



# Adopt your local station

A guide on how you can help create a friendly and safe environment at your local train station



COMMUNITY RAIL

# Thinking of joining the EMR Station Adoption team?

Thank you for your interest in adopting one of the EMR stations. Together, with your help and support, we can raise the standards at our stations and create a friendly, safe and well maintained environment.

This guide has been designed to give you an understanding of what joining the Station Adoption team involves and to show you the great improvements that are currently being made to our stations with the support of Station Adopters.

If you'd like to join the team, simply fill in the form at the back of this leaflet and post it back to us at the address provided, or you can apply on our website: **[eastmidlandsrailway.co.uk/stationadoption](http://eastmidlandsrailway.co.uk/stationadoption)**

If you have any queries, you can email us at **[stationadoption@eastmidlandsrailway.co.uk](mailto:stationadoption@eastmidlandsrailway.co.uk)**

© Cover photo credit to Market Rasen Station Adoption Group

## Through Station Adoption we aim to:

- Bring together communities
- Create an environment that you feel proud of
- Encourage volunteering across the network



## What is Station Adoption?

We have a large number of stations across our network, many of which are unmanned. It's not always possible for us to visit all our stations as often as we would like – this is where we need help from people like you.

If you and other members of your community come together as Station Adopters, you can make a huge difference to your local station.

## Why adopt a station with EMR?

Whether large or small, a local train station is at the heart of the community. It's used by people on a regular basis and is one of the main transport hubs in the community. We want all our stations to provide a welcoming, clean and well maintained environment, and with the help of our Station Adopters, we can make sure we achieve this.

Station adoption is part of community rail, a growing grassroots movement that spans Mainland Britain. It is made up of community rail partnerships, which work along railway lines or across regions, as well as station adoption groups and other local organisations, that work to connect communities with their railways.

## What are the benefits Station Adoption?

The benefits of station adoption is multi faceted, and can support with: health and well-being of volunteers; environment and sustainability, development and cohesion of the wider community; and the success of the railway. These all support improvement and growth to the railway and also the local area.

So, if you are looking for a fun and engaging way to get involved with the community, make new friends, learn a new skill and take pride in your local station then Station Adoption could be for you.

## Who are our Station Adopters?

Station Adopters are an integral part of the Railway family and are the eyes and ears at their local station, helping to ensure it's well presented and well looked after. They're supported by the EMR Community Rail team.

Our Station Adopters get involved by: doing tasks such as reporting faults and station issues, through to developing an

# Community Rail Partnerships

We work closely with Community Rail Partnerships across our network. Many of these have a Community Rail Partnership Officer who helps our Station Adopters and takes part in volunteering days throughout the year. Further details of these lines can be found on our route map in this leaflet.



## Here's what some of our Station Adopters had to say...

"I volunteer because I love gardening and care about the environment, plus it has helped me find a whole new group of friends."

**Carol, Kidsgrove**

"It costs me nothing but a bit of spare time and it's great being part of a team."

**Austin, Blythe Bridge**

"It gives us the opportunity to make our station more attractive and promote train travel as the preferred means of getting to and from nearby cities."

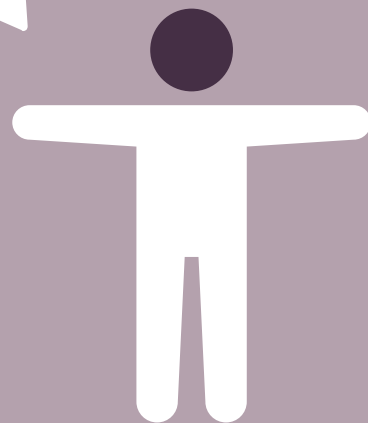
**Michael, Matlock Bath**

"I volunteer because I think it helps others to take care of where they live."

**Janice, Tutbury & Hatton**

"I always have a laugh and a chat working with my fellow volunteers and end the day feeling like we have done something useful."

**Marion, Alsager**



# What are the perks of being a Station Adopter?

We also provide all Station Adoption members with a photo identity card and a high visibility vest. You will need to keep both of these with you when carrying out Station Adoption duties.

Make new friends from your community

Take pride and satisfaction by helping your community

Improve your physical health and mental wellbeing

Create a nicer environment at your local station

Complimentary EMR travel pass for Station Adoption duties\*

Meet fellow Station Adopters at the annual conference



\*As a Station Adopter, you will also be entitled to four complimentary tickets per year



# Guidelines for Station Adoption activities



Station Adoption activities must always be carried out in line with our safety brief. The scope is always agreed between the Station Adopter (or group) and the Community Rail team.

Work that **can be** undertaken by a Station Adopter includes:

- Painting of structures and fixtures to cover graffiti
- Gardening and landscaping
- Litter picking/rubbish removal
- General aesthetic improvements
- Reporting of vandalism
- Reporting of property faults



Work that is **not to be** performed by a Station Adopter includes:

- Repairs and alterations that involve structural aspects of buildings and fixtures
- Any work that involves track, signals or equipment
- Repairs to level crossing equipment
- Work within 1.25m of the white line or the edge of the platform
- Repairs or alterations to lighting or electrical fittings, gas or water
- Work on the track, as this is carried out by either EMR or Network Rail



Make a difference and be proud of your local station by joining the EMR Station Adoption team today

## Become a member of Community Rail Network

Once you've become a Station Adopter, you will be able to join the Community Rail Network.



Community Rail Network is the membership body for over 70 Community Rail Partnerships, representing community rail lines across the UK, as well as more than 1,000 Station Adoption teams.

Community Rail Network also holds an annual awards ceremony, which rewards Station Adopters and Community Rail Partnerships for work that they've done over the previous 12 months.

To find out more about Community Rail Network and what they can offer you, visit [communityrail.org.uk](https://communityrail.org.uk)





The information in this booklet was correct at the time of printing in March 2021, but may be subject to change without prior notice. East Midlands Railway does not accept liability for any inaccuracy of this information.

# Join the Station Adoption team today

The easiest way to apply to be a Station Adopter is to visit [eastmidlandsrailway.co.uk/stationadoption](http://eastmidlandsrailway.co.uk/stationadoption). However, if you prefer, please fill in the form below and return to the address at the foot of this page.

I confirm that I \_\_\_\_\_ (name)  
wish to adopt \_\_\_\_\_ (station)

I have read and understood the Station Adoption guide and terms and conditions. I am willing to be bound by these conditions.

Signature \_\_\_\_\_

Date \_\_\_\_\_

Name \_\_\_\_\_

Address \_\_\_\_\_  
\_\_\_\_\_  
\_\_\_\_\_  
\_\_\_\_\_

Telephone number \_\_\_\_\_

Mobile number \_\_\_\_\_

Email address \_\_\_\_\_

Please tick the box if you're happy for your contact details to be held by EMR ☐

Please tick the box if you're happy for your contact details to be passed onto the responsible council if your station is covered by a Community Rail Partnership Officer ☐

Once complete, please send with a passport sized photo in a stamped addressed envelope to:

**Station Adoption**  
**East Midlands Railway**  
**1 Prospect House**  
**Prospect Place**  
**Pride Park**  
**Derby**  
**DE24 8HG**



## Stations need a helping hand too

Nurture your station and help it grow by becoming a Station Adopter today at [eastmidlandsrailway.co.uk](http://eastmidlandsrailway.co.uk)

**E M R**

COMMUNITY RAIL